



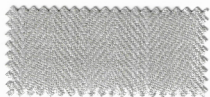
LUCAN FABRICS

---



BELFAST, COMO & MISTRAL  
CONTRACT & DOMESTIC

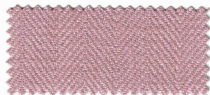
# BELFAST



GREY



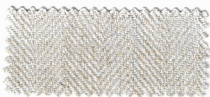
NAVY



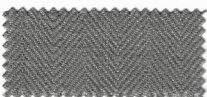
PINK



MILK



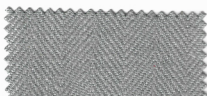
ECRU



MINK



NATURAL



POWDER BLUE



KELLS

# COMO



FOREST GREEN 797



NAVY 1880



DARK GREY 45



TEAL 707



SILVER 121



ORANGE 50



MUSTARD 520



GREEN 328



BABY BLUE 1750



BEIGE 170



BLACKBERRY 559



ROSEWOOD 1670



TAUPE



BURGUNDY 36

# MISTRAL



ORANGE



CHARCOAL



KHAKI



SAFFRON



METIS



CLOUD



SHELL



HAVANNA



FUSCHIA



PEACOCK



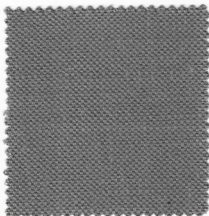
JEANS



BROWN



WHITE



PEBBLE



PARMA



CONCRETE

# SPECIFICATIONS

## BELFAST

COMPOSITION	60% LINEN, 40% VISCOSE
WIDTH	140CM/54"
FLAME RETARDANCY	CIG & MATCH. CAN BE BROUGHT UP TO CRIB 5 IF REQUIRED
APPLICATION	CURTAINS & UPHOLSTERY
ABRASION	< 35,000 RUBS

## COMO

COMPOSITION	100% POLYESTER
WIDTH	140CM/54"
FLAME RETARDANCY	CIG & MATCH. CAN BE BROUGHT UP TO CRIB 5 IF REQUIRED
APPLICATION	CURTAINS & UPHOLSTERY
ABRASION	< 60,000 RUBS

## MISTRAL

COMPOSITION	72% COTTON, 28% LINEN
WIDTH	140CM/54"
FLAME RETARDANCY	CIG & MATCH. CAN BE BROUGHT UP TO CRIB 5 IF REQUIRED
APPLICATION	CURTAINS & UPHOLSTERY
ABRASION	< 35,000 RUBS



LUCAN FABRICS

37C Barrow Road, Dublin Industrial Estate, Glasnevin, Dublin, D11 WD56

Phone: +353 (1) 830 5552 - Fax: +353 (1) 830 5290

Email: [enquiries@lucanfabrics.ie](mailto:enquiries@lucanfabrics.ie) - Website: [www.lucanfabrics.ie](http://www.lucanfabrics.ie)

Follow us on:

